



GAT MONTHLY MEMBERSHIP PROGRESS REPORT

Results as of: 2/28/2023

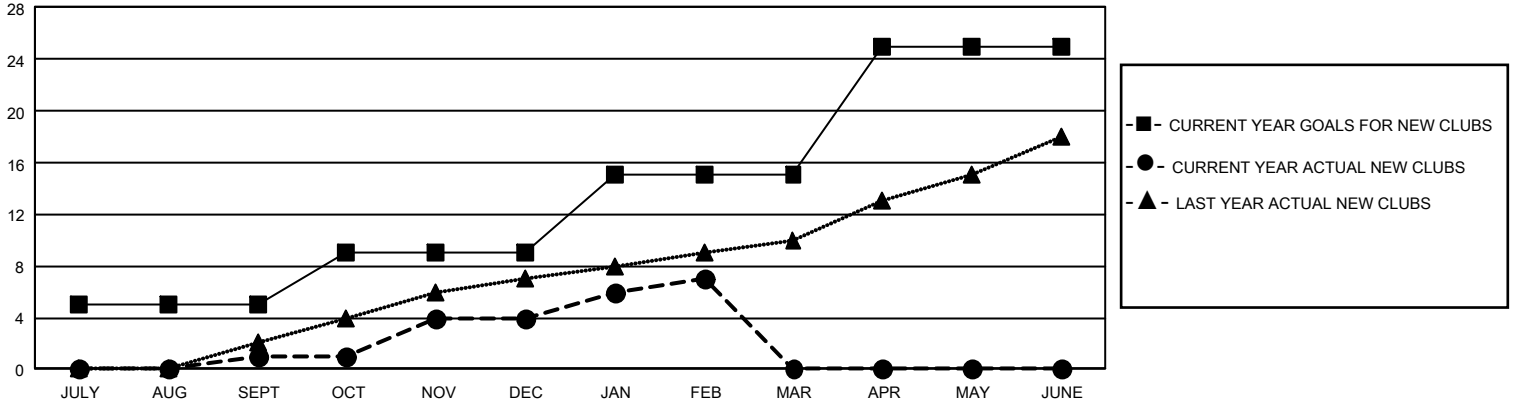
GMT Constitutional Area 4, Group B

REPORT DOES NOT INCLUDE CLUBS IN UNDISTRICTED AREAS.

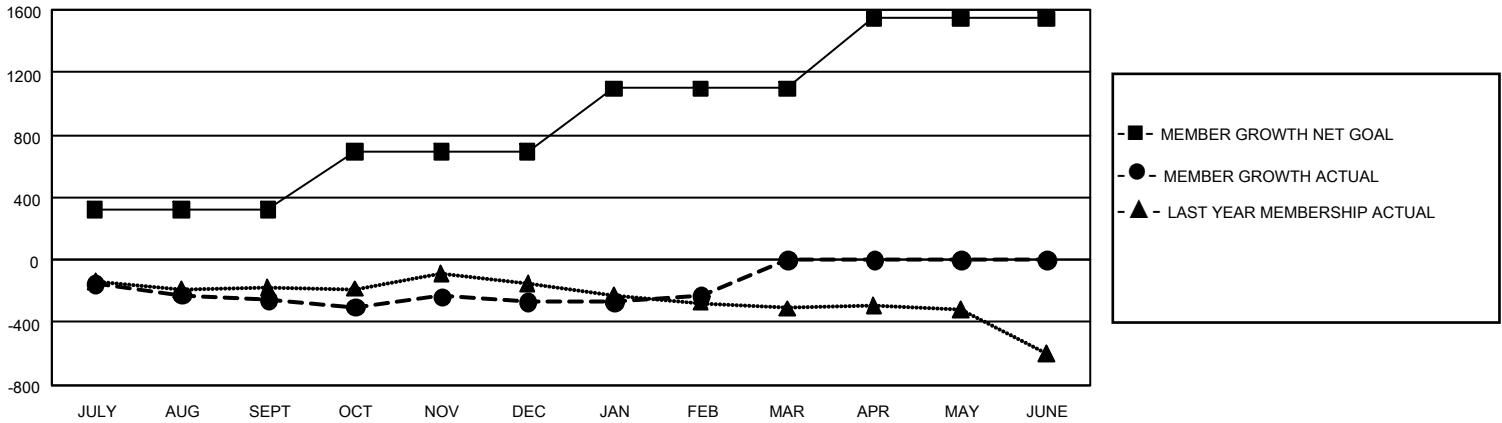
Clubs			
RESULTS FOR 2022-2023			
QUARTER	NEW CLUB GOAL	NEW CLUBS	DROPPED CLUBS
JULY/AUG/SEPT	15	1	4
OCT/NOV/DEC	12	3	2
JAN/FEB/MAR	18	3	2
APR/MAY/JUNE	30	0	0

Members			
RESULTS FOR 2022-2023			
QUARTER	MEMBER GROWTH NET GOAL	MEMBER GROWTH ACTUAL	DROPPED MEMBERS ACTUAL (including transfers)
JULY/AUG/SEPT	322	591	784
OCT/NOV/DEC	368	815	743
JAN/FEB/MAR	407	581	512
APR/MAY/JUNE	449	0	0

GOALS AND ACTUAL NEW CLUBS CUMULATIVE



GOALS AND ACTUAL MEMBERS CUMULATIVE



DROPPED CLUBS: 8	989 CLUBS OF 2,124 ADDED 1 OR MORE NEW MEMBERS	<u>GENDER DISTRIBUTION</u>	
		MALE 58,746 (83.69%) FEMALE 11,428 (16.28%) NON BINARY 0 (0.00%) PREFER NOT TO ANSWER 22 (0.03%)	
<u>DROPPED MEMBERS</u>		CLICK HERE FOR CUMULATIVE MEMBERSHIP DATA	TOTAL FAMILY UNIT MEMBERS 804
DECEASED 558 CLUB CANCELLED 5 OTHER 1,472 TOTAL 2,035			FAMILY MEMBERS PAYING HALF DUES 369